

# Penny by Fibre ⚡ood



# Penny by Fibre Mood

Version without lining

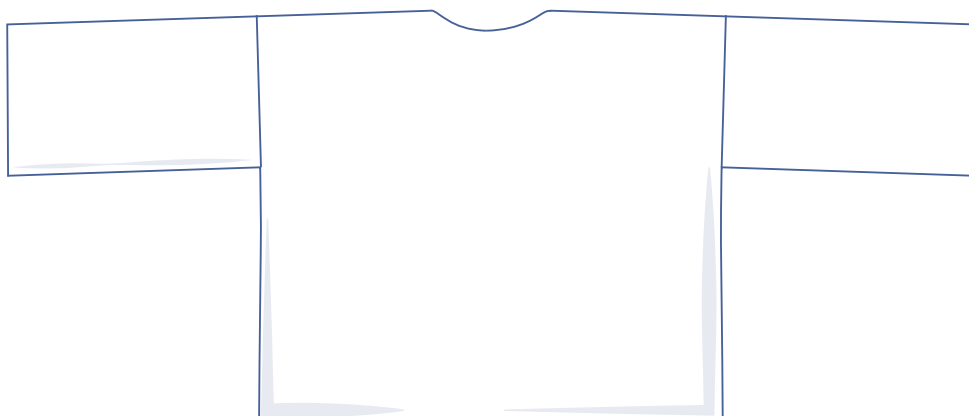
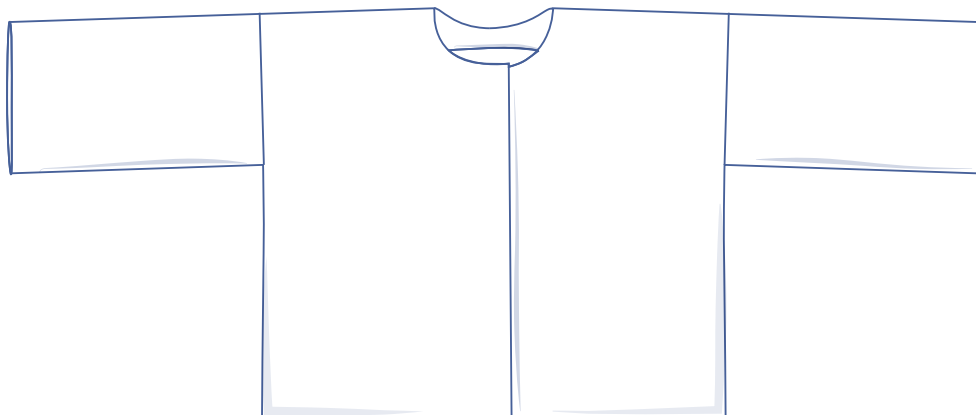


Version with lining



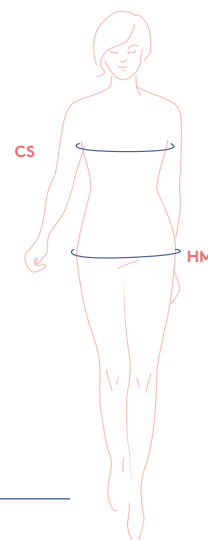
**XS - XXXL**

Short, oversized jacket with wrist-length, wide sleeves. It can be adapted to the season. Use a warm fabric or lined, faux fur to make a winter version. Use a thinner fabric without a lining to create a summer version.



## sizing chart

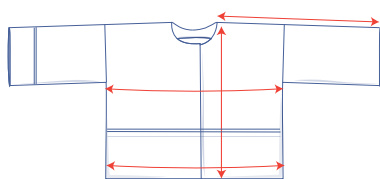
size	XS	S	M	L	XL	XXL	XXXL
EUR	32 34	36 38	40 42	44 46	48 50	52 54	56 58 60
UK	4 6	8 10	12 14	16 18	20 22	32 34	24 26 28
CS (cm)	76 80	84 88	92 96	100 104	110 116	122 128	134 140 144
HM (cm)	86 90	94 97	100 103	106 109	115 120	125 130	135 140 145



**Chest size (CS):** Measure horizontally at the widest point of the bust.

**Hip measurement (HM):** Measure horizontally at the widest point of the lower body.

## measurements



size	XS	S	M	L	XL	XXL	XXXL
length (cm)	58	60	62.25	64.25	68.75	72	75
sleeve** (cm)	55.25	57	58.75	60.5	62.75	65.25	68
1/2 CS (cm)	57	61	65	69	74	80	86
1/2 HC* (cm)	59.25	63.25	67.25	71.25	76.25	82.25	88.25

\*\* The sleeve length is the size including the shoulder length.

\* (HC) hem circumference (average, cm)

Compare the stated lengths to the measured or desired lengths. Lengthen or shorten the jacket and/or the sleeves by cutting the pattern pieces at the indicated double lines and then spreading the pattern pieces out X cm from each other or overlapping them, as needed. Make sure that the CF and CB lines and the side seams all run straight through.

**IMPORTANT**

Adapt the amount of fabric used to the alterations that you are making to the pattern!

## notions



- Thread
- Iron-on fusible interlining: 85 cm
- 3 snaps (ø 1 cm):
- Lining: see table (optional)
- Fabric: see table

size	XS-M	L-XL	XXL-XXXL
lining* (cm)	100	170	185

\* 140 cm wide

size	XS	S-M	L	XL-XXXL
fabric* (cm)	170	180	195	220

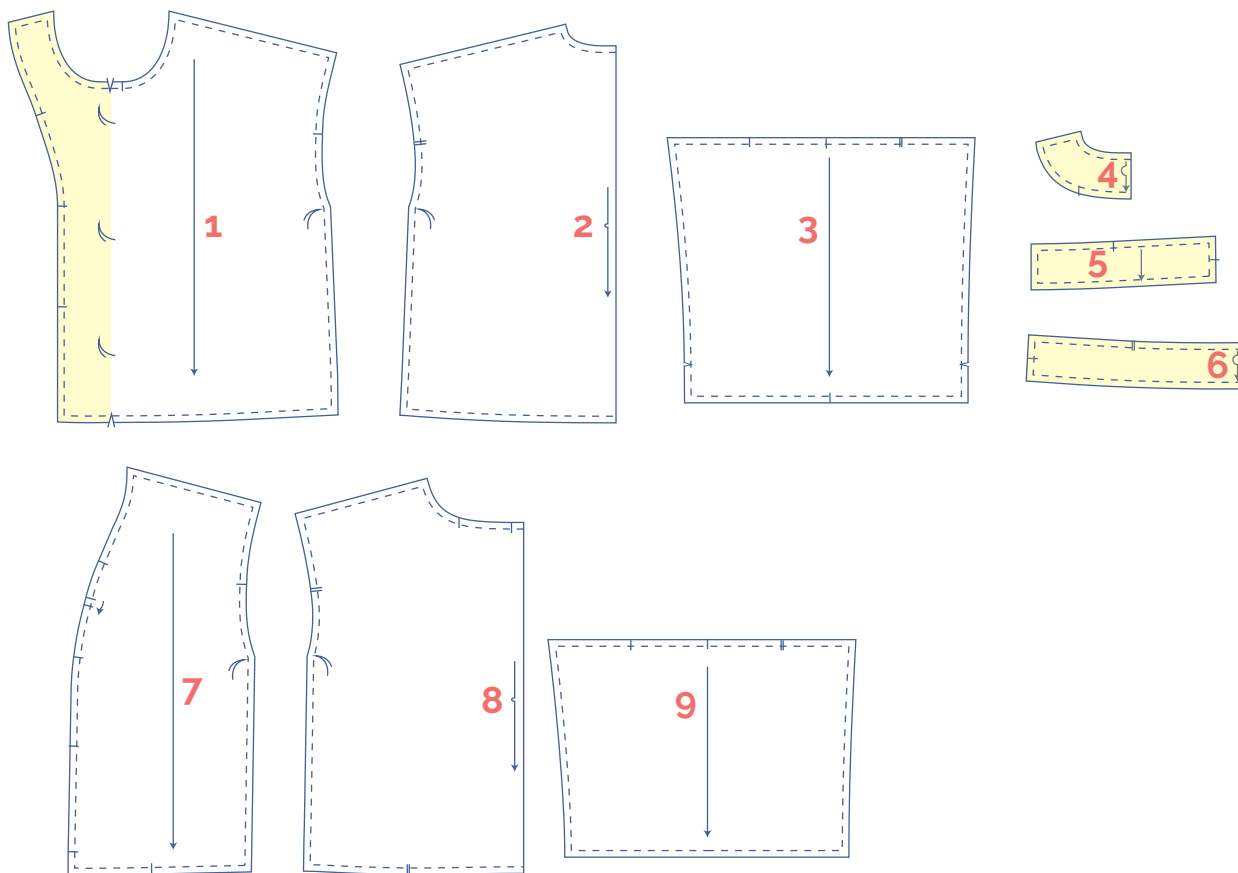
\* 140 cm wide

## fabric advice



- The Penny Jacket can be made from various fabrics depending on the look you want.
- You can use a thicker jersey, like a Ponte di Roma.
- Neoprene is also an option, which will make the jacket look more voluminous.
- Faux fur, like we used for our example.
- A fabric with a supple drape, like crêpe or viscose, with a (floral) print is also great for this model. This will give you a summertime version with a kimono effect.
- Whatever the case, make sure that the fabric isn't too stiff.

## pattern pieces & seam allowances (in cm)



Draw a seam allowance of 1 cm all the way around the paper pattern pieces unless stated otherwise in the illustrations. The sides of the pattern pieces 2, 4, 6, and 8, which lie on the fabric fold (—>), do not have any seam allowance.

Indicate important points on the outline of the pattern:

- by making a nick where a vertical stripe (|) is or double vertical stripes (||) are
- by cutting a notch out where a V notch (∇) is
- cut a small corner out of pieces 2, 4, 6, and 8, which lie on the fabric fold, to mark the middle of these pieces.

Mark the places for the buttons (x) and the important points (◇) using basting threads.

- 1** front: 2x
- 2** back: 1x on fabric fold
- 3** sleeve: 2x
- 4** neckline facing back: 1x on fabric fold
- 5** hem facing front: 2x
- 6** hem facing back: 2x
- 7** front lining: 2x
- 8** back lining: 1x on fabric fold
- 9** sleeve lining: 2x

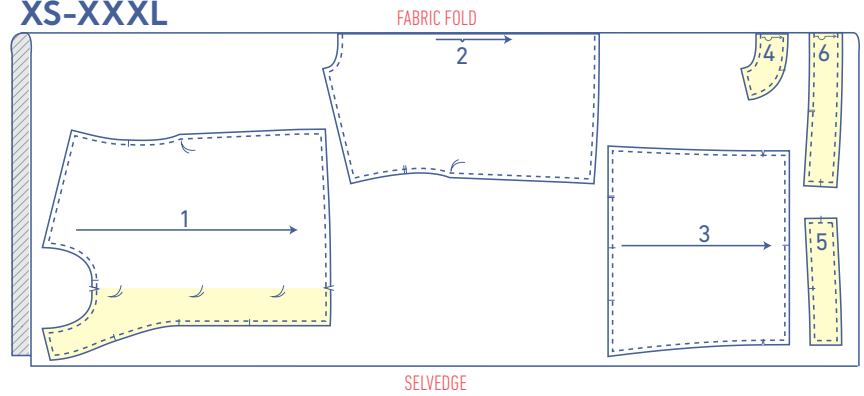
## fabric plan

### 1. fabric

IMPORTANT

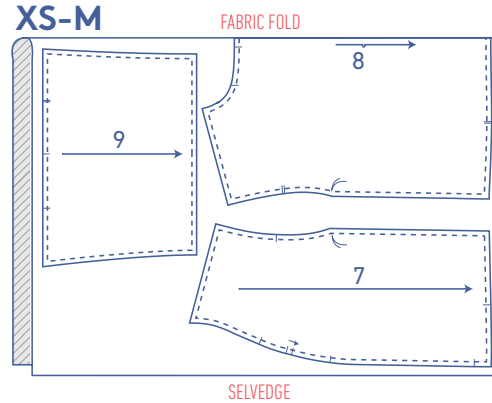
If you use a fabric with a nap (like faux fur), then make sure to lay the pattern pieces in the same direction. The faux fur of the fabric will lay down when you brush your hand over it.

XS-XXXL

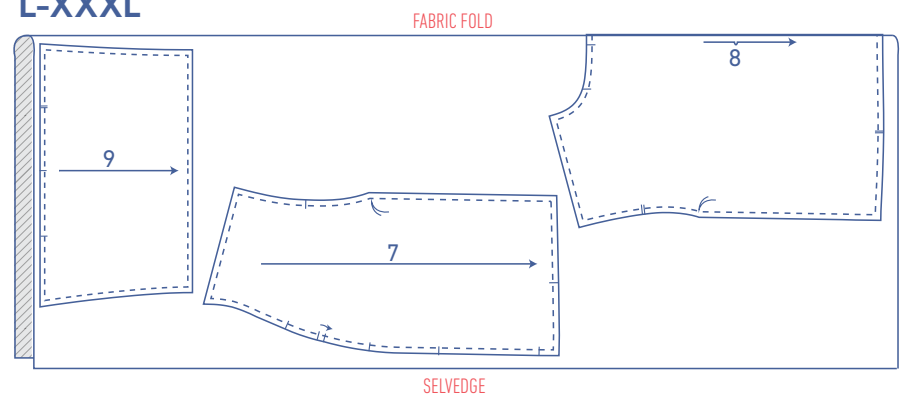


### 2. lining

XS-M



L-XXXL



## sewing instructions



The method used to finish sewing the garment depends on the fabric used.

The pieces are sewn together each time with the right sides of the fabric matching exactly, unless stated otherwise.

### Key with symbols and abbreviations used



→ right side



→ reverse side



→ right side lining



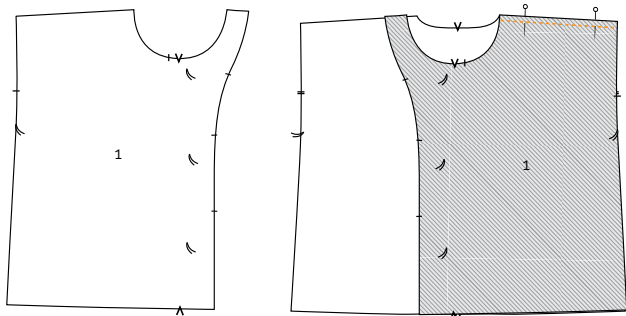
→ reverse side lining

**CF** → centre front

**CB** → centre back

**FP** → front panel

**BP** → back panel

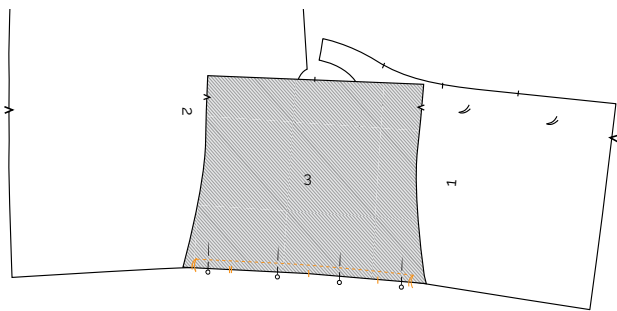


**1**

**a**

Pin into place and sew the shoulder seams for the front (1) and back (2) pieces together. Press the seam allowance open.

**NOTE:** the shoulder seams of the version without a lining must be overlocked separately before you can sew them together.



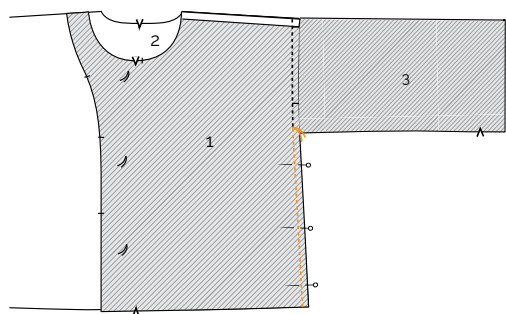
**b**

Pin and sew the top of the sleeve (3) to the armhole with the corresponding nicks matching exactly. The single marking matches the single marking on the front exactly and the double marking matches the double marking on the back exactly. The single nick at the top matches the shoulder seam exactly.

Sew the sleeve until you reach the marking.

Press the seam allowance open.

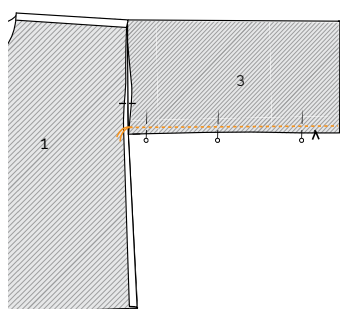
**NOTE:** the raw edges of the version without a lining must be overlocked.



**c**

Fold the sleeve in half and place the front and back so that the right sides of the fabric are on top of each other. Sew the side seam until you reach the marking. Fold the seam allowance to the side and sew the side seams for the sleeve. Press the seam allowance open every time.

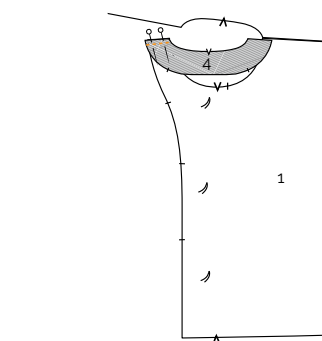
**NOTE:** the side seams on the front, back, and sleeves of the version without a lining must be overlocked first.



**2**

**a**

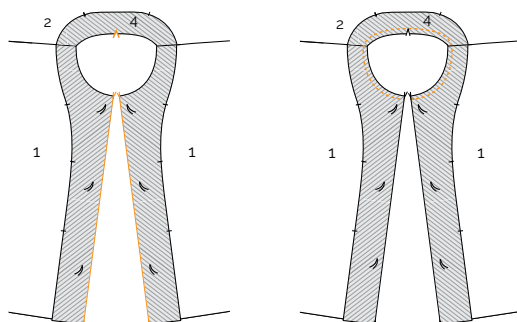
Pin and sew the shoulder seams of the neckline facing back (4) to the shoulder seam of the shaped facing for the front each time. Press the seam allowance open.



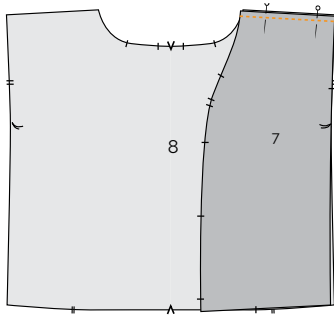
**b**

Fold the shaped facing for the front inside out at the V notch so that the right sides of the fabric are lying against each other. Place the neckline facing back, with the right side down, on the neckline of the back piece. Sew the neckline at 1 cm.

Cut triangles out of the seam allowance so that the seam will be nice and round.





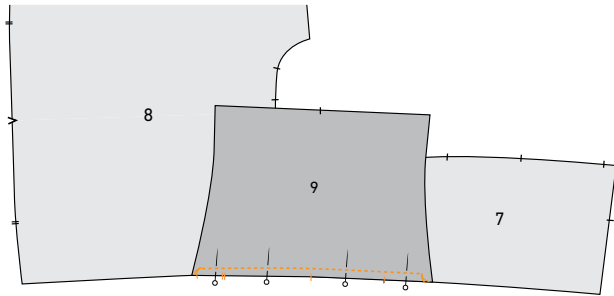


### 3

**NOTE:** instruction points a through d are for the lined version only.

#### a

Pin into place and sew the shoulder seams for the front lining (7) and back lining (8) pieces together. Press the seam allowance open.

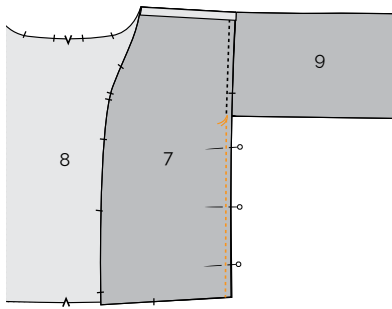


#### b

Pin the top of the sleeve lining (9) to the armhole with the corresponding nicks matching exactly. The single marking matches the single marking on the front exactly and the double marking matches the double marking on the back exactly. The single nick at the top matches the shoulder seam exactly.

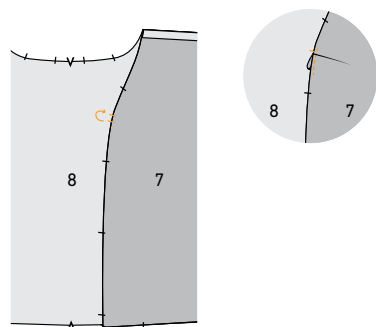
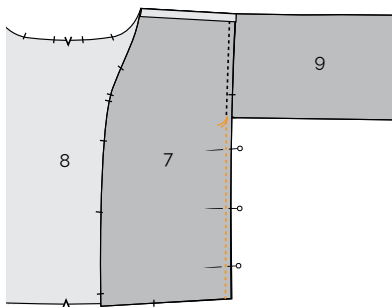
Sew until you reach the marking.

Press the seam allowance open.



#### c

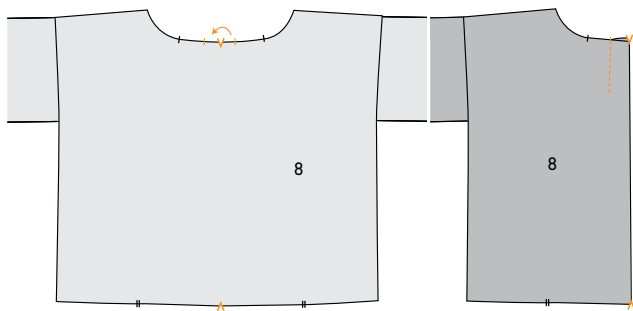
Fold the sleeve in half and place the front and back so that the right sides of the fabric are on top of each other. Sew the side seam until you reach the marking. Fold the seam allowance to the side and sew the side seams for the sleeve. Leave an opening of 15 cm in the side seam of 1 sleeve. Press the seam allowance open every time.



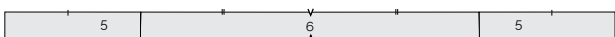
#### d

Create the small pleat in the front lining piece by matching the nicks exactly. Sew into place at 0.5 cm.





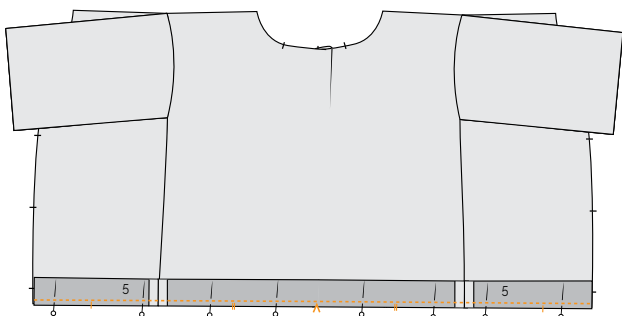
Make an inverted box pleat in the back lining by folding the fabric in half, with the nicks matching exactly. Sew the pleat into place vertically at 5 cm.



**e**

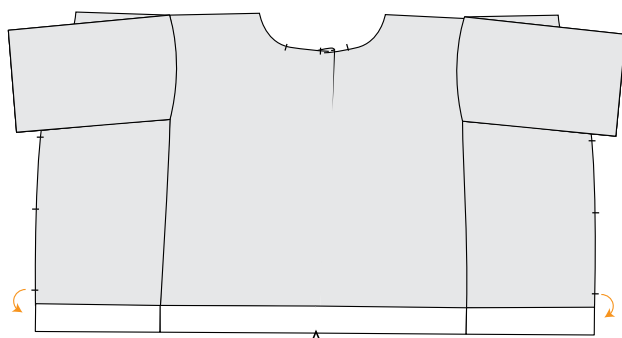
Pin and sew the side seams (= the seams with the markings) of the hem facing front (5) and the hem facing back (6) into place. Press the seam allowance open.

**NOTE:** the raw edges of the hem facing of the version without a lining must be overlocked.



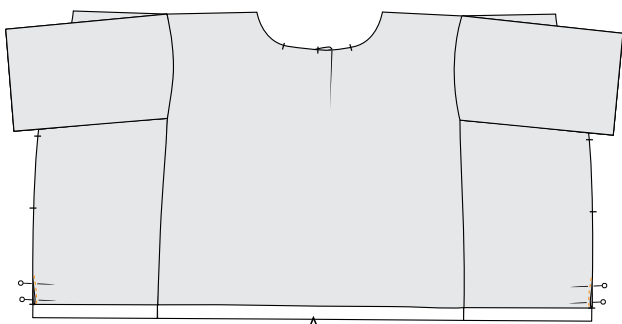
**f**

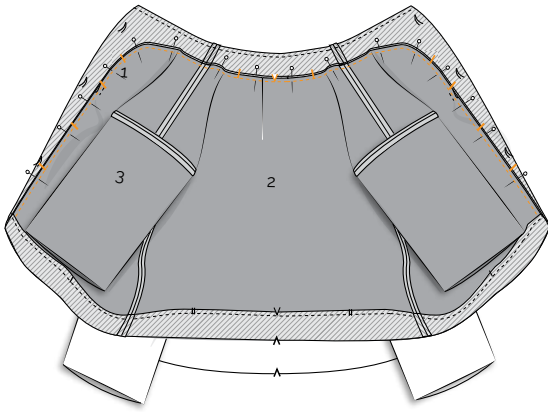
Pin and sew the top of the (combined) hem facing to the bottom of the lining. The corresponding nicks will match exactly. (The lining of the back is slightly wider than the hem facing for the back to make it easier to sew the 2 different fabrics together.)



**g**

Fold the nick in the front lining at CF down until it overlaps the hem facing by 2.5 cm (half-way). Sew this pleat into place.

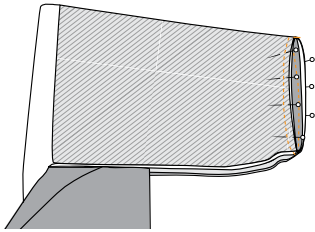




**4**

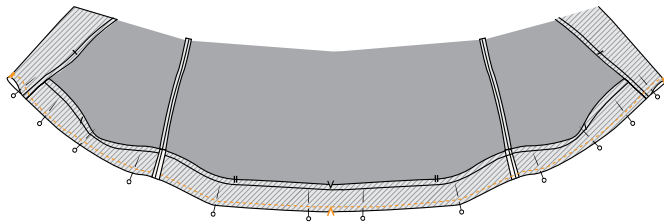
**a**

Pin and sew the CF seam of the lining to the shaped facing and the neckline facing. The corresponding nicks will match exactly each time.



**b**

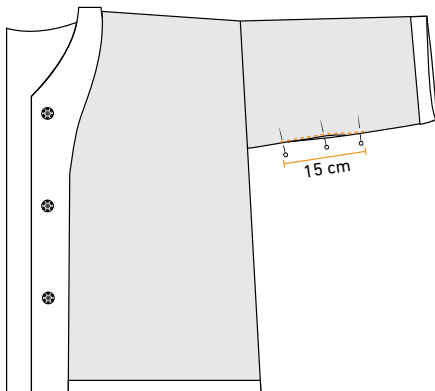
Put the lining sleeves inside the fabric sleeves (as these would be in a finished jacket) and take hold of the hem of the fabric and lining sleeves so that the right sides of the fabric are facing each other. Pull both layers through the opening in the hem. Pin and sew the hems together all the way around. The nicks in both sleeves must be matching exactly. Then turn inside out.



**c**

Fold the shaped facing for the front to the front at the V notch in the hem. The right sides of the fabric should now match exactly. Sew the hems of both jackets together. Turn inside out.

**5**



Sew the lining and fabric jackets together with a 'chain' at the underarm, the side seams, and the shoulder seams.

Sew the hem into place.

Sew or stitch the opening in the lining sleeve closed and then sew the snaps on at the indicated places.