

Nala by Fibre ⚡ood

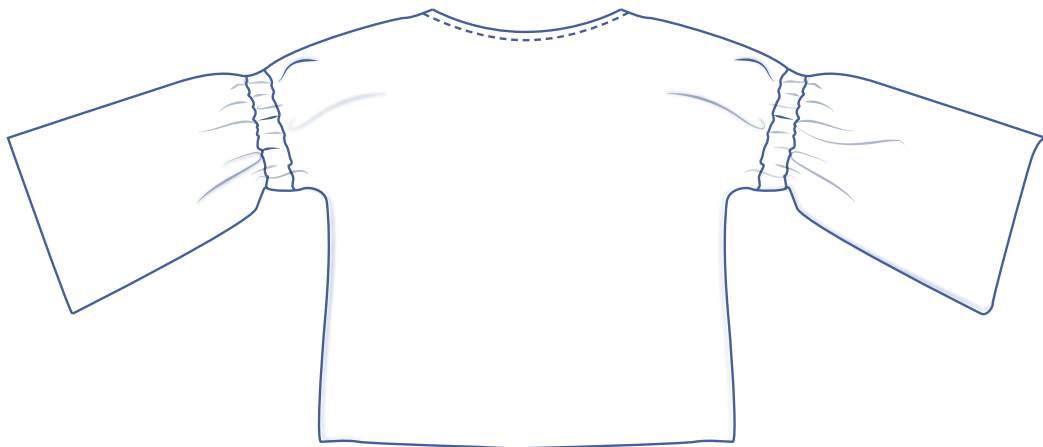
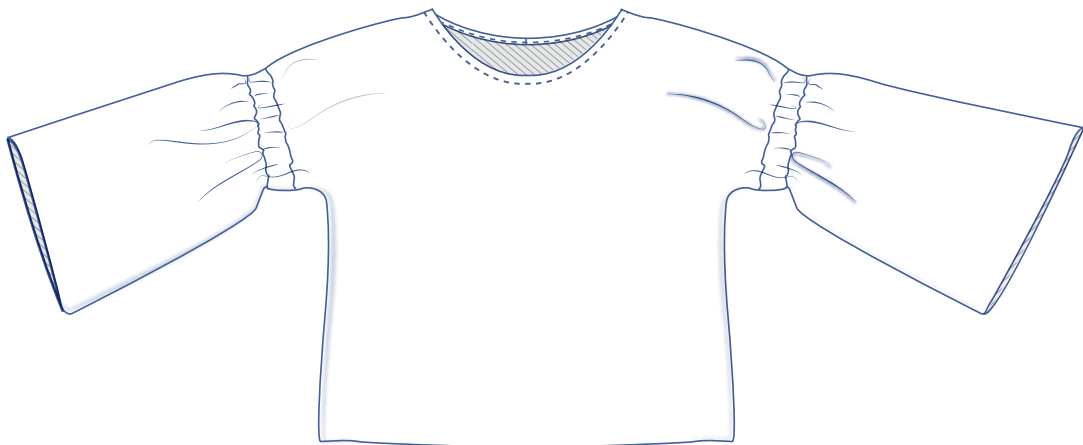


Nala by Fibre Mood



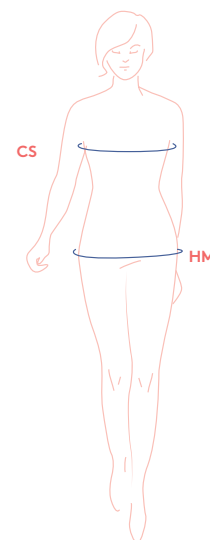
XS - XXXL

Loose-fitting top with rounded neckline and cute elastic, eye-catching details. It's easy to switch the lantern sleeves from three-quarter sleeves to long sleeves. Opt for three-quarter sleeves if you have wider hips. Go for long sleeves if you have slender hips. Read below to find out how you alter the sleeve length.



sizing chart

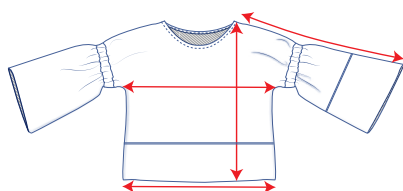
size	XS	S	M	L	XL	XXL	XXXL
EUR	32 34	36 38	40 42	44 46	48 50	52 54	56 58 60
UK	4 6	8 10	12 14	16 18	20 22	32 34	24 26 28
CS (cm)	76 80	84 88	92 96	100 104	110 116	122 128	134 140 146
HM (cm)	86 90	94 97	100 103	106 109	115 120	125 130	135 140 145



Chest size (CS): Measure horizontally at the widest point of the bust.

Hip measurement (HM): Measure horizontally at the widest point of the lower body.

measurements



size	XS	S	M	L	XL	XXL	XXXL
length (cm)	55.25	57.5	59.5	61.5	66.25	69.25	72.5
sleeve* (cm)	49.5	51.25	53	54.75	56.5	59.25	61.75
1/2 CS (cm)	43.5	47.5	51.5	55.5	60.5	66.5	72.5
1/2 HC (cm)	44.75	48.75	52.75	56.75	61.75	67.75	73.75

* The sleeve length is the size including the shoulder length.

** HC: hem circumference

Compare the stated lengths to the measured or desired lengths. Lengthen or shorten the sweater and/or the sleeves by cutting the pattern pieces at the indicated double lines and then spreading the pattern pieces out X cm from each other or overlapping them. Make sure that the CF and CB lines and the side seams all run straight through.

IMPORTANT

Adapt the amount of fabric used to the alterations that you are making to the pattern!

notions



size	XS	S	M	L	XL	XXL	XXXL
bias tape (cm)	57.75	59	60.25	61.5	66.5	67.5	68.75

size	XS	S	M	L	XL	XXL	XXXL
elastic* (cm)	2x 36	2x 37	2x 38.5	2x 39.5	2x 40.5	2x 42	2x 43

* 2.5 cm wide

- Thread
- Elastic: see table
- Cotton or lightweight fabric (for bias tape (optional) and casing in the sleeve): max. 60 cm
- Bias tape: optional because you can also use pattern piece 4 to make your own bias tapes out of your preferred fabric
- Fabric: see table

size	XS-S	M-L	XL	XXL-XXXL
fabric* (cm)	100	165	175	185

* 140 cm wide

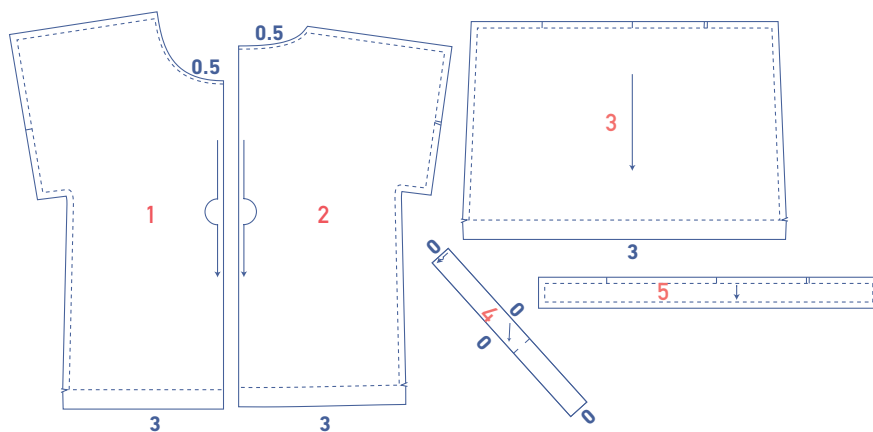
fabric advice



- We made this top in an interlock fabric. Interlock (e.g. Ponte di Roma) is a double-knit tricot that looks the same on both the front and the back. The fabric is heavier and stiffer than single jersey, which is only one layer, and is slightly elastic.
- You can also use sweater, French terry, neoprene, or scuba fabrics to make this top.

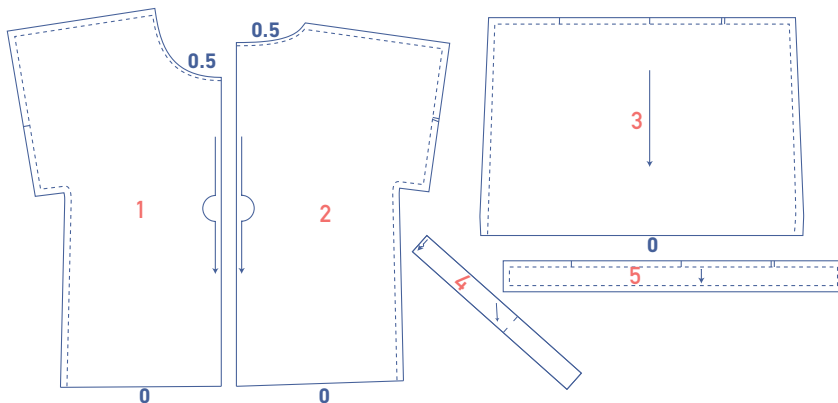
pattern pieces & seam allowances (in cm)

1. for a fabric that frays



- 1** front: 1x on fabric fold
- 2** back: 1x on fabric fold
- 3** sleeve: 2x
- 4** bias tape neck: 1x on fabric fold (diagonally across the fabric, in cotton)
- 5** sleeve casing: 2x (in cotton)

2. for a fabric that does not fray easily



Draw a seam allowance of 1 cm all the way around the paper pattern pieces unless stated otherwise in the illustrations. The sides of the pattern pieces 1, 2 and 4 that lie on the fabric fold (—>) do not have any seam allowance.

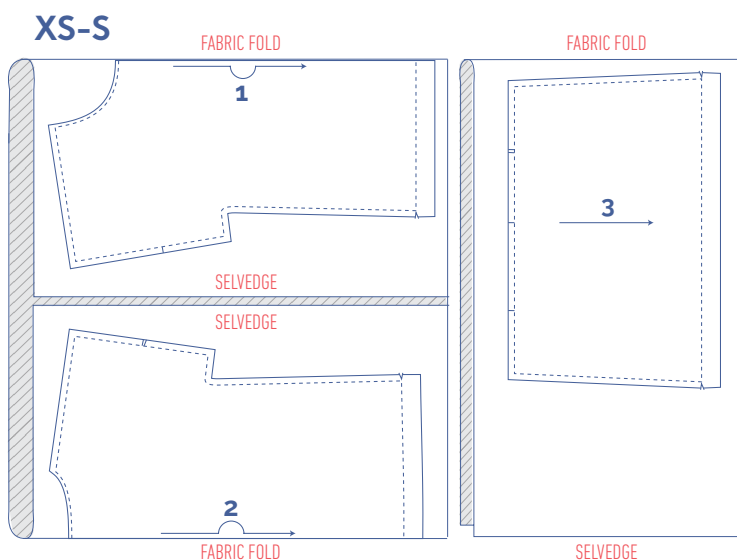
Indicate important points on the outline of the pattern:

- by making a nick where a vertical stripe (|) is or double vertical stripes (||) are
- by cutting a notch out where a V notch (∨) is
- cut a small corner out of pieces 1, 2, and 4, which lie on the fabric fold, to mark the middle of these pieces.

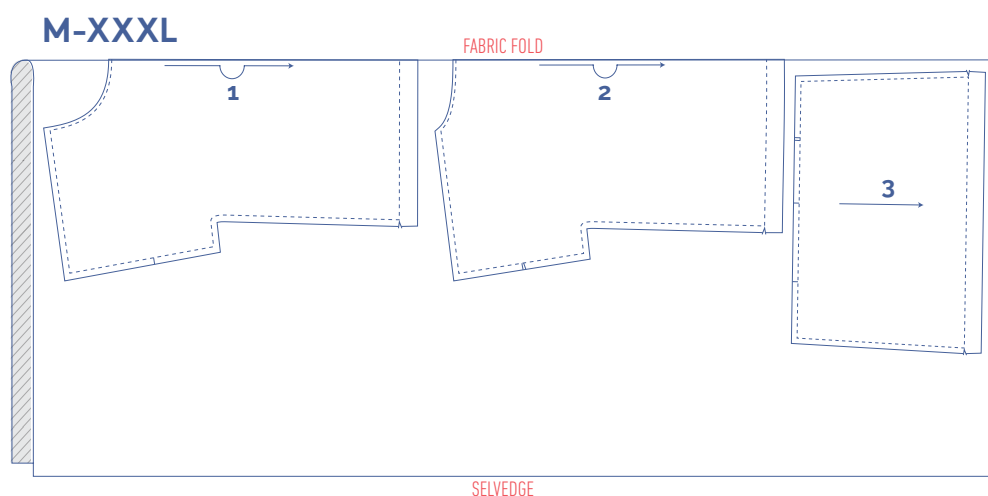
fabric plan

Fold the selvages of the fabric to the middle so that you create 2 fabric folds. Cut out the front (1) and the back (2) from the fabric fold.

Place the selvages back on top of each other and fold the fabric in half to cut out the sleeve (3).



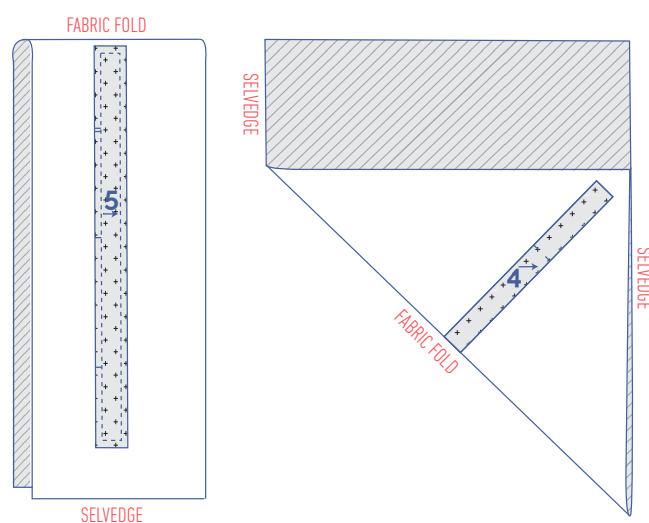
Fold the fabric in half and cut out the front (1) and back (2) from the fabric fold each time; the sleeve (3) is underneath this and not against the fabric fold.



fabric plan cotton/lightweight fabric

Fold the fabric in half and cut out the sleeve casing (5).

Refold the remaining fabric by folding a corner of the fabric diagonally. Place the bias tape neck (4) against the fabric fold and cut it out.



sewing instructions



The finishing method depends on the fabric used. The pieces are sewn together each time with the right sides of the fabric matching exactly, unless stated otherwise. The edges of this fabric do not necessarily need to be finished because they will not ravel.

If you use a fabric that ravels, then it is best to add a hem.

Key with symbols and abbreviations used



→ right side



→ reverse side



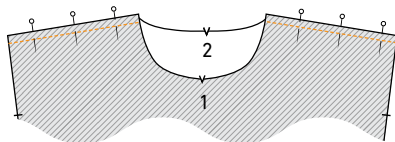
→ cotton or lightweight lining



→ elastic

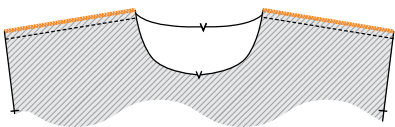
CF → centre front

CB → centre back



1

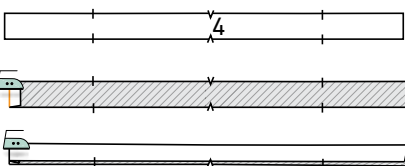
Pin into place and sew the shoulder seams for the front (1) and back (2) pieces together. Finish the edges together using an overlock stitch. Press the seam allowances to the front.

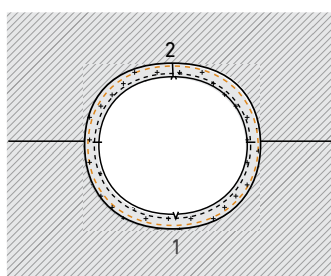
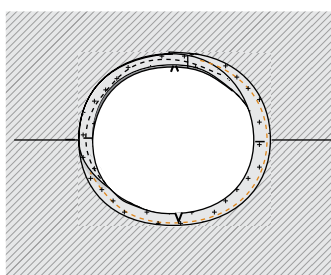
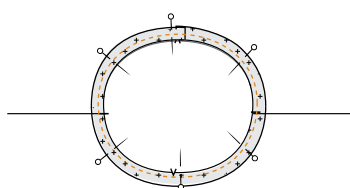
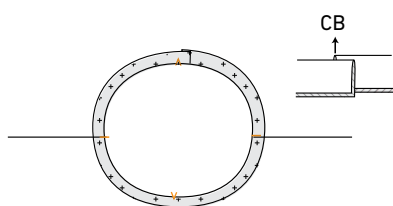
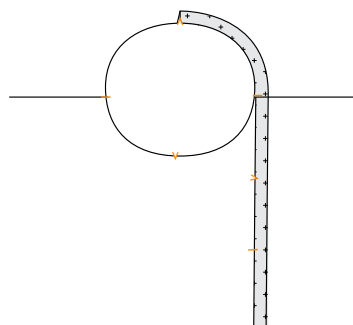
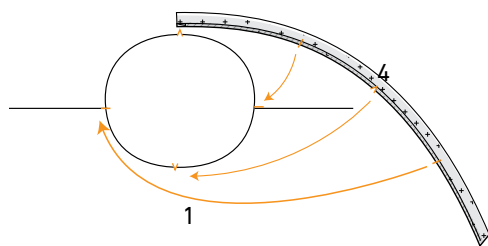


2

a

Press 1 cm of 1 short side of the bias tape (bought or self-made) over to the wrong side. Press the bias tape, lengthwise, with the right side of the fabric facing out.





b

Pin the bias tape to the neckline along the right side with the folded end even with the CB, the other V notch even with the V notch that indicates the CF, and the other nicks even with the shoulder seams.

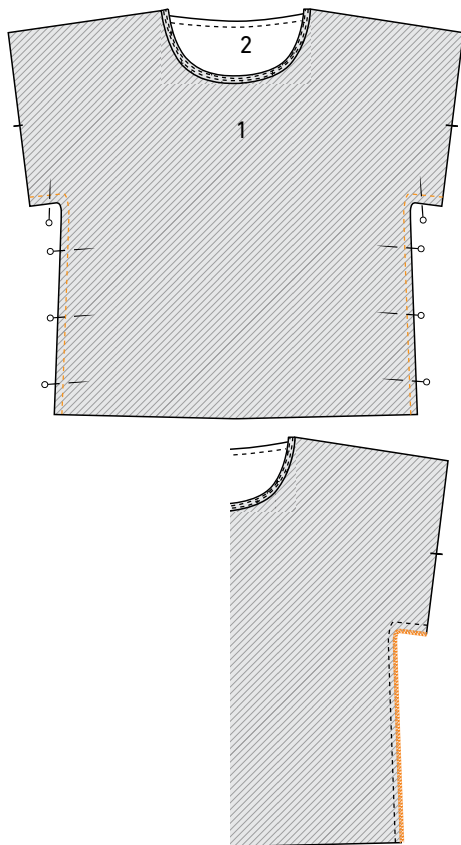
The unfinished end is lying on top of the finished end. Sew into place at 0.5 cm.

c

Fold the bias tape and the seam allowance out of the way and sew the bias tape into place at 2 mm from the seam through all the layers of fabric.

d

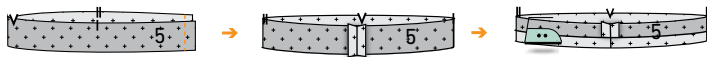
Fold the bias tape all the way over to the wrong side and sew it into place right next to the edge.



3

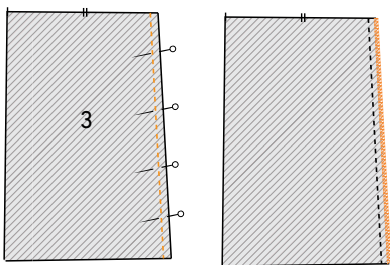
Pin and sew the side seams into place. Finish the edges together using an overlock stitch. Press the seam allowances to the front.

4



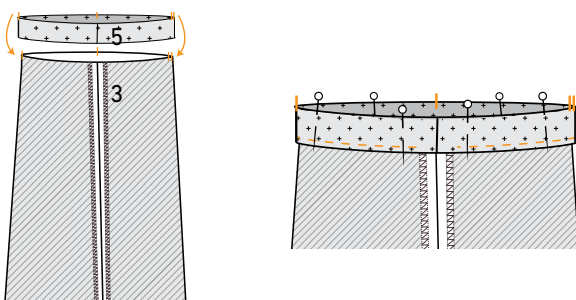
a

Pin and sew the side of the sleeve casing (5) closed. Press the seam allowance open. Press 1 cm of the bottom (the side without the markings) over to the wrong side.



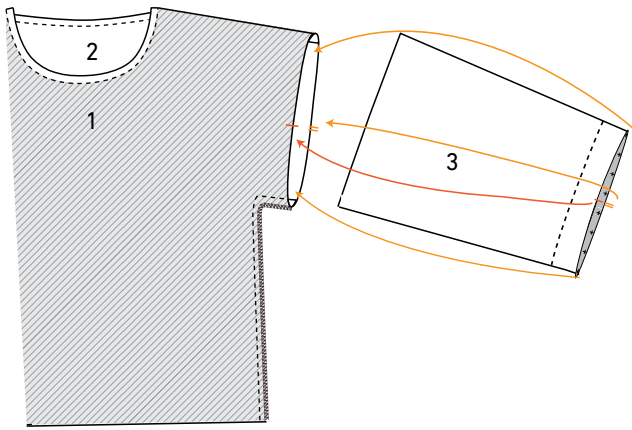
b

Pin and sew the sides of the sleeve (3) closed. Finish the edges together using an overlock stitch.



c

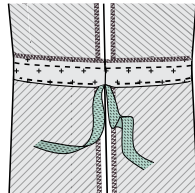
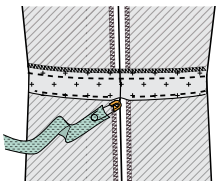
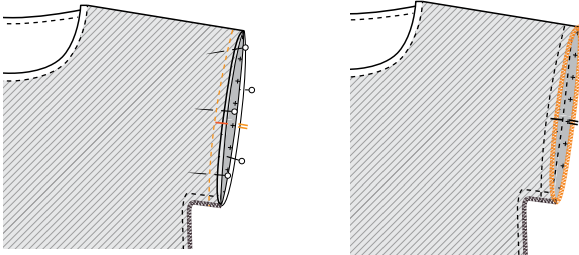
Pin the casing to the wrong side of the sleeve. The tops (raw edges) are even. Pin and sew the bottom of the casing into place 2 mm from the edge. Leave an opening near the side seam to be able to thread the elastic through it later.



5

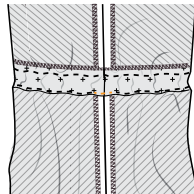
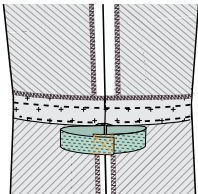
a

Pin and sew the top of the sleeve to the armhole with the nicks and the seams matching exactly. Finish the raw edges together using an overlock stitch.



b

Thread the elastic, using a safety pin, through the casing. Overlap the ends by 3 cm and sew the ends together using a X stitch. Pull the elastic into the tunnel completely and sew the opening closed.



6

We will not finish the hems because this fabric does not fray easily. You can sew at 2 mm from the edge to keep it from stretching any further.

If you use a fabric that frays easily, then finish the hems with an overlock stitch. Press the hem allowance over and sew into place using a stretch stitch.