

Constance by Fibre ⚡ood



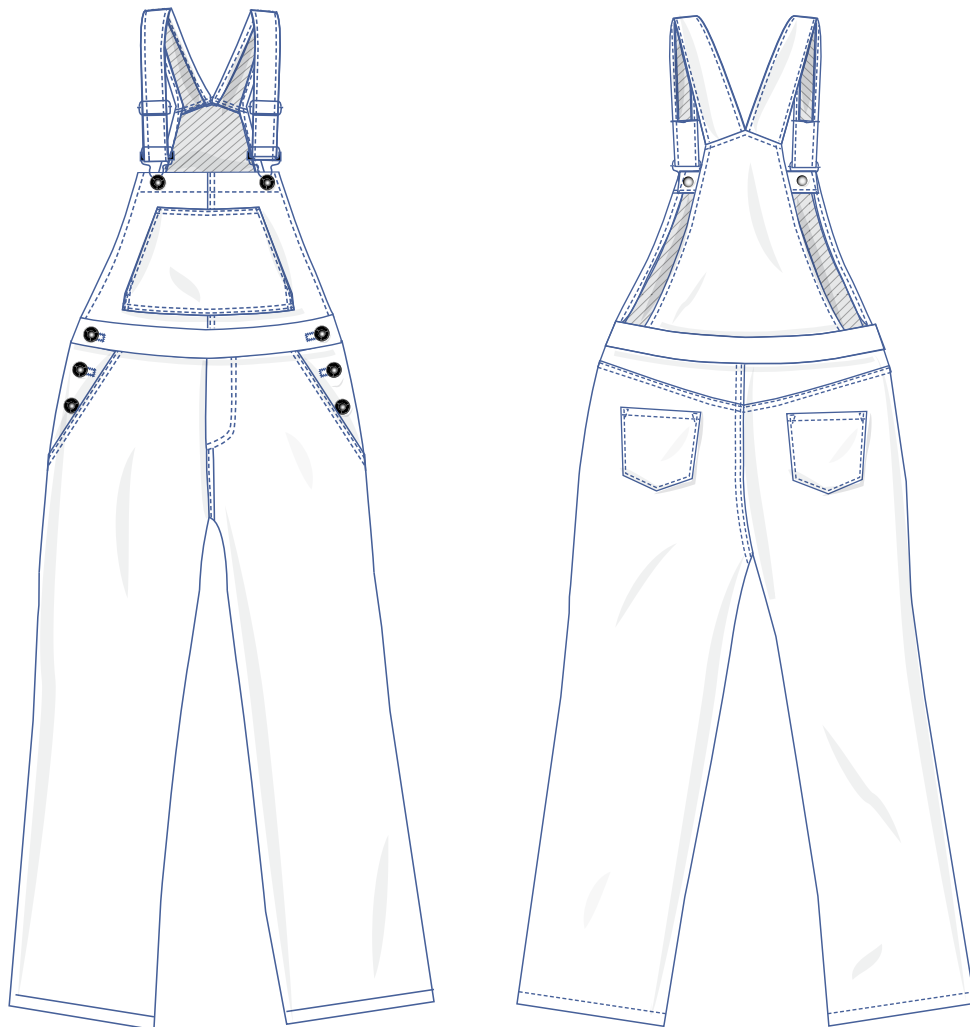
Constance by Fibre ⚡ood

***☆☆



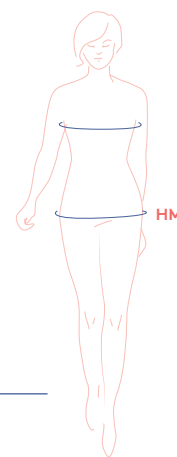
32 - 54

Comfortably cut overalls in trendy corduroy (in cognac and pale sea green). Adjustable shoulder straps. Button closure on the sides. Side pockets along the side seam. Large breast pocket.



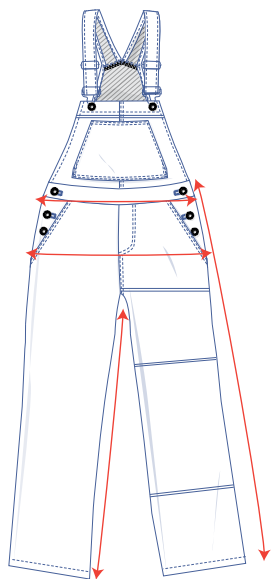
sizing chart

| size (EU) | 32 | 34 | 36 | 38 | 40 | 42 | 44 | 46 | 48 | 50 | 52 | 54 |
|-----------|----|----|----|----|-----|-----|-----|-----|-----|-----|-----|-----|
| UK | 4 | 6 | 8 | 10 | 12 | 14 | 16 | 18 | 20 | 22 | 24 | 26 |
| HM (cm) | 86 | 90 | 94 | 97 | 100 | 103 | 106 | 109 | 115 | 120 | 125 | 130 |



Hip measurement (HM): Measure horizontally at the widest point of the lower body.

measurements



| size | 32 | 34 | 36 | 38 | 40 | 42 | 44 | 46 | 48 | 50 | 52 | 54 |
|--------------------|-------|-------|-------|-------|--------|--------|--------|--------|--------|--------|--------|--------|
| inseam length (cm) | 74 | 74 | 74 | 74 | 74 | 74 | 74 | 74 | 74 | 74 | 74 | 74 |
| side length (cm) | 98.75 | 99.25 | 99.5 | 100 | 100.75 | 101.25 | 101.75 | 102.25 | 102.75 | 103.25 | 103.75 | 104.25 |
| 1/2 HM (cm) | 47.25 | 48.5 | 49.75 | 51.75 | 53.5 | 55.25 | 56.5 | 58.25 | 61.5 | 64.5 | 67.5 | 70.5 |
| 1/2 WM* (cm) | 39 | 40 | 41 | 43 | 45 | 47 | 48 | 50 | 53.25 | 56.5 | 59.75 | 62.75 |

* waistline measurement

Compare the stated lengths to the measured or desired lengths. Lengthen or shorten the pant legs by cutting the pattern pieces at the indicated double lines and then spreading the pattern pieces out X cm from each other or overlapping them. Make sure that the centre front and centre back line are always straight.

IMPORTANT

Adapt the amount of fabric used to the alterations that you are making to the pattern!

supplies



- Thread
- Jeans buttons: 8
- Overalls buckle: 2
- Adjustable buckle: 2
- Lining (= cotton): 35 cm
- Fabric: see table

| size | 32 | 34-42 | 44-48 | 50-52 | 54 |
|--------------|-----|-------|-------|-------|-----|
| length* (cm) | 200 | 205 | 210 | 235 | 240 |

* 140 cm wide

| size | 32-34 | 36-48 | 50-54 |
|--------------|-------|-------|-------|
| fabric* (cm) | 180 | 220 | 250 |

* 145 cm wide

IMPORTANT

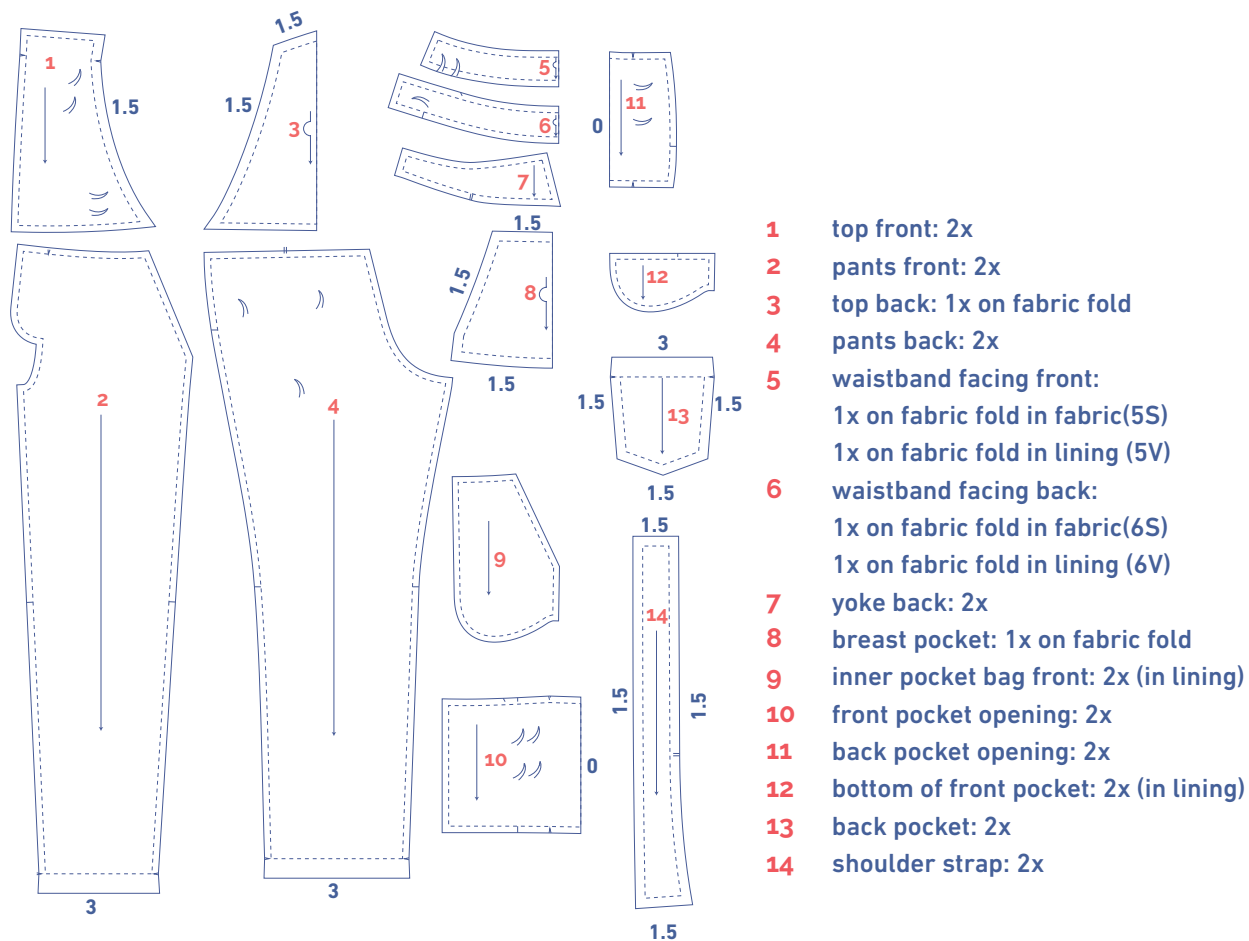
Cotton shrinks, so wash fabric first before using.

fabric advice



Make the Constance Overalls using a sufficiently heavy fabric that still has a very supple drape, like a cotton corduroy with wide or fine ribbing (baby rib). Jeans or a thicker wool fabric can also be a perfect choice. Avoid fabrics that are too stiff and won't fall well. Wash the cotton corduroy first before cutting out your pieces because the fabric will shrink lengthwise!

pattern pieces & seam allowances (in cm)



Draw a seam allowance of 1 cm all the way around the paper pattern pieces unless stated otherwise in the illustrations. The sides of pattern pieces 3, 5, 6 and 8 that lie on the fabric fold (—>) do not have any seam allowance.

Indicate important points on the outline of the pattern:

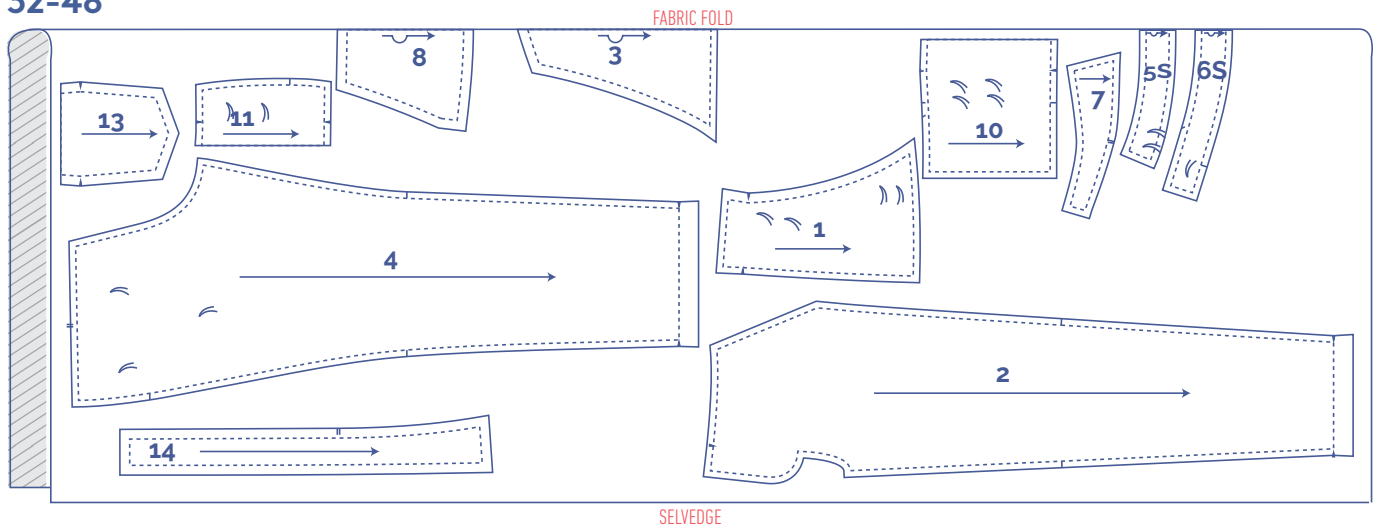
- by making a nick where a vertical stripe (|) is or double vertical stripes (||) are
- by cutting a notch out where a V notch (V) is
- cut a small corner out of pieces 3, 5, 6 and 8, which lie on the fabric fold, to mark the middle of these pieces.

Mark the places for the buttons (x), button holes (—) and the pockets (◇) using a needle and thread.

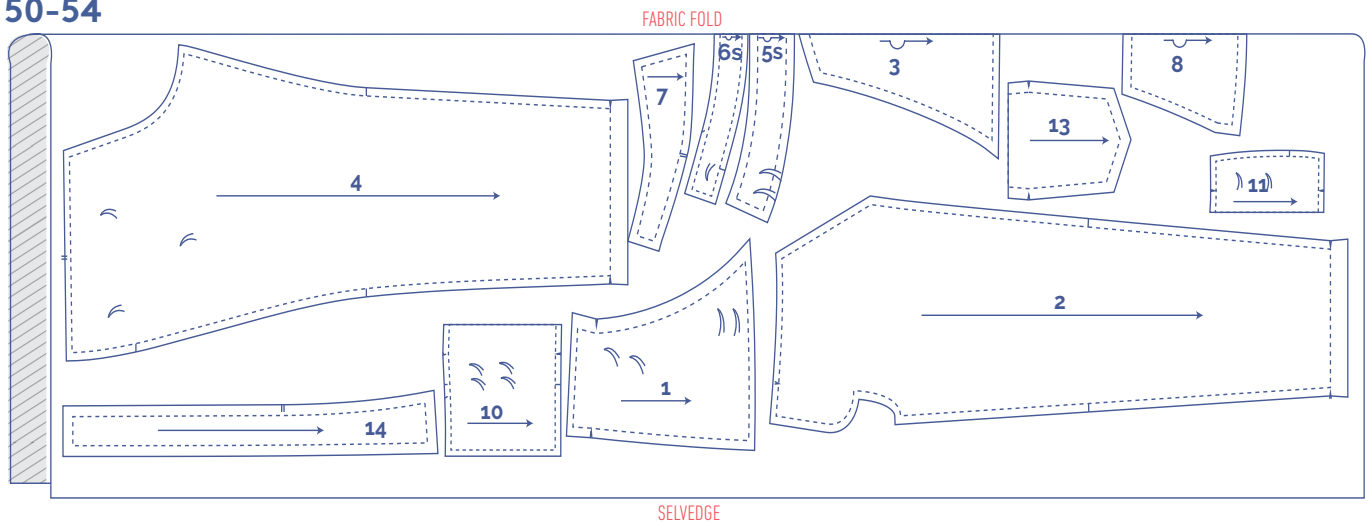
fabric plan

fabric plan for a standard fabric width of 140 cm

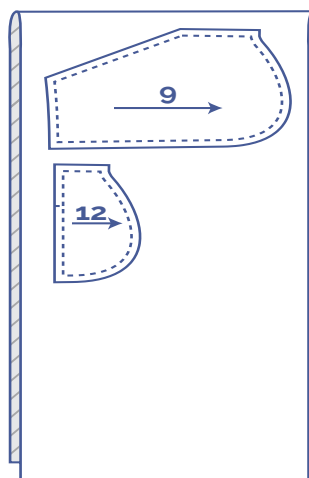
32-48



50-54

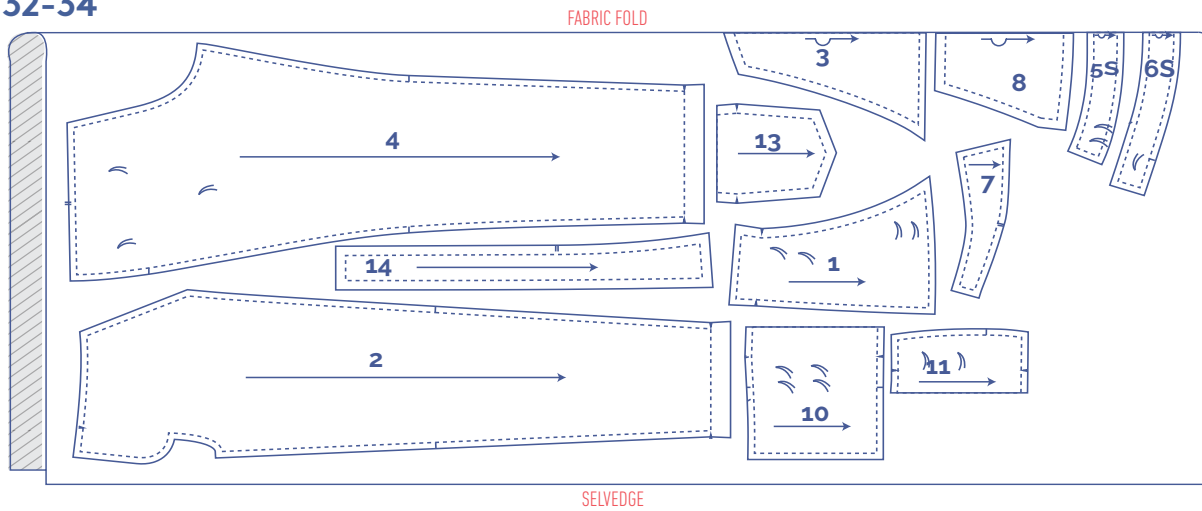


interfacing

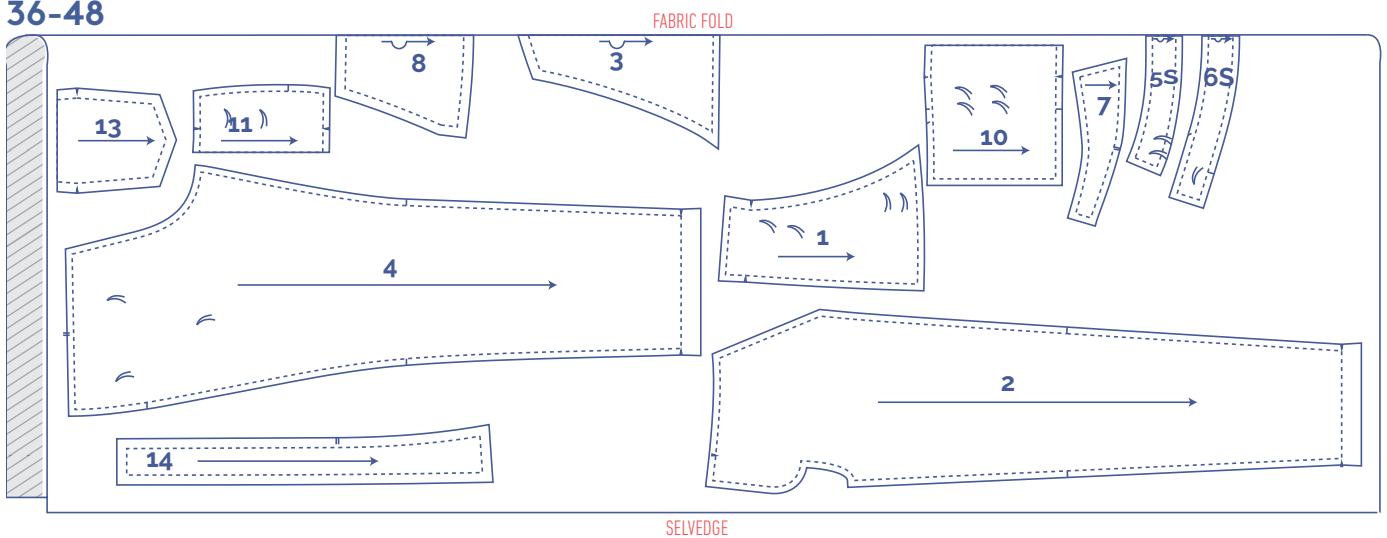


fabric plan for a fabric width of 145 cm (corduroy)

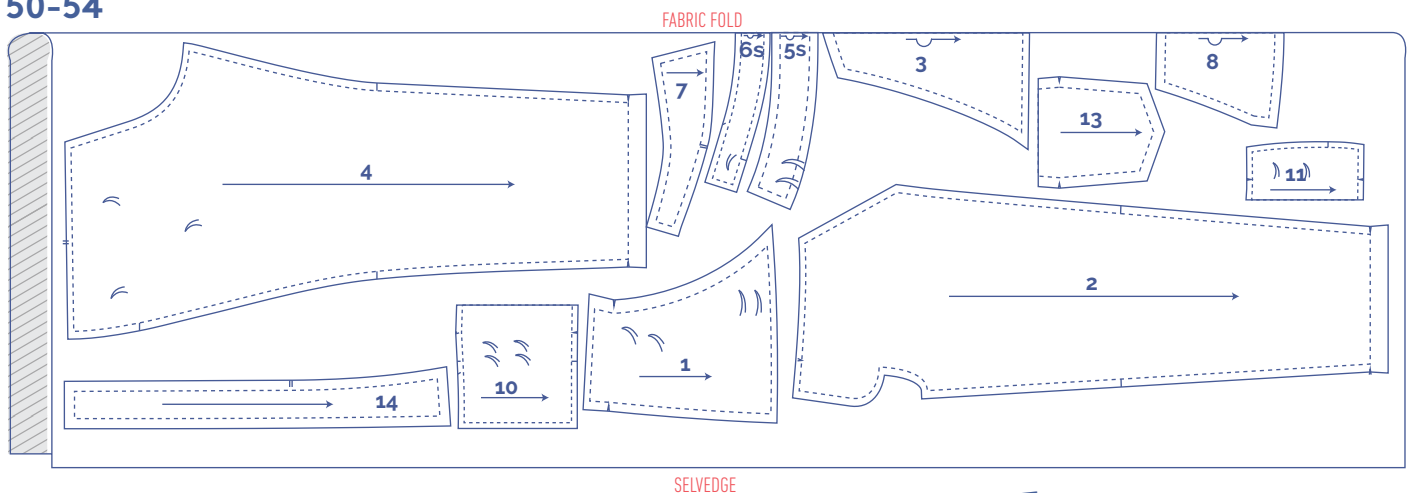
32-34



36-48



50-54



For the lining, follow the same diagram found on page 5.

IMPORTANT





Corduroy is a fabric with nap, so lay all of the pattern pieces in the same direction lengthwise. When brushing the fabric, the hairs should lay flat.

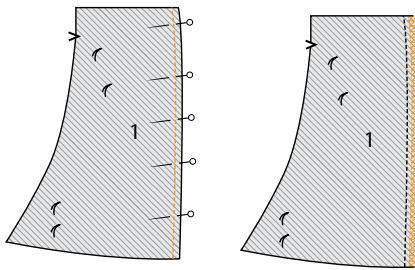
sewing instructions



The method used to finish sewing the garment depends on the fabric used. Always sew pieces with the right sides faced together, unless stated otherwise.

Key with symbols and abbreviations used

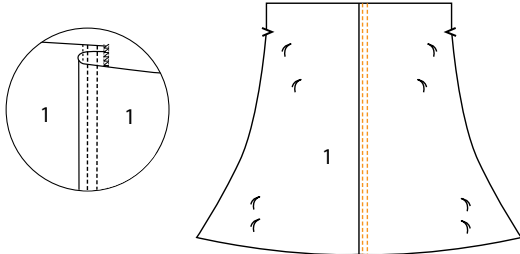
-  → right side
-  → reverse side
-  → right side lining
-  → reverse side lining
- LFP** → left front panel
- LBP** → left back panel
- FP** → front panel
- BP** → back panel
- CF** → centre front
- CB** → centre back



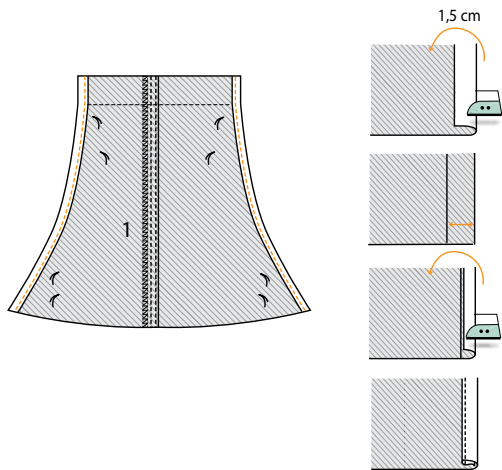
1

a

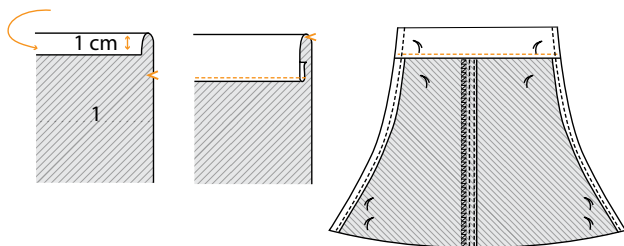
Pin and sew the CF seam of the top front pieces (1) together. Finish the raw edges together using an overlock stitch.



Fold the seam allowance in the direction of the LF and secure in place with two rows of topstitching.

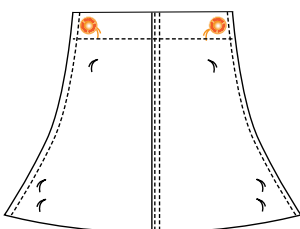


Press 1.5 cm of the sides onto the wrong side and open back up. Fold the raw edge to the pressed fold line and then fold once again. Sew in place right next to the edge.

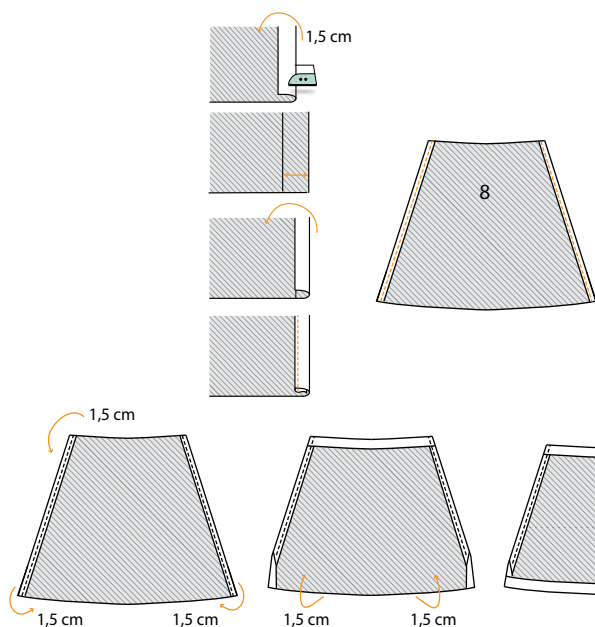


b

First, press the top of the front top piece 1 cm over. Repeat this step at the V notches. Sew in place right next to the edge.



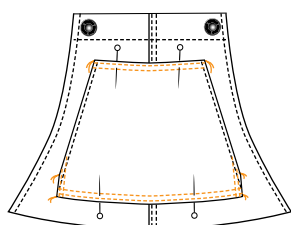
Attach the jeans buttons at the indicated places.



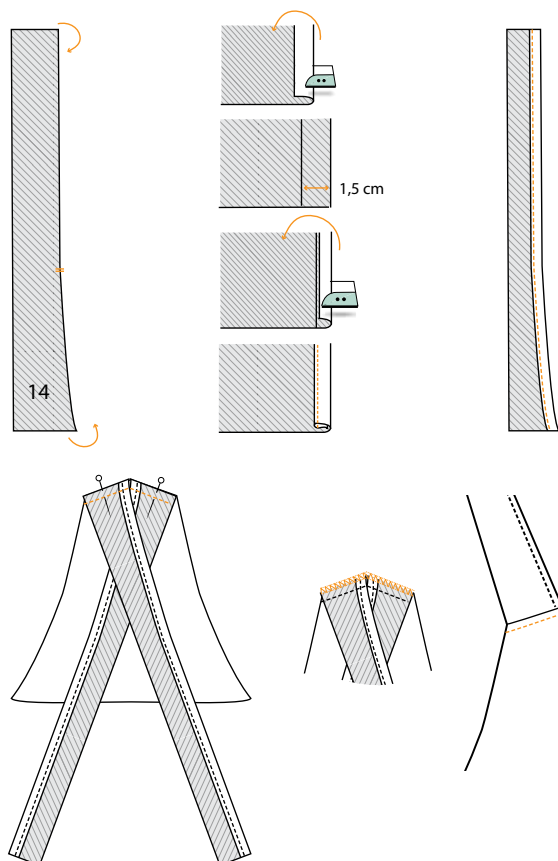
C

Press 1.5 cm of the sides of the breast pocket (8) onto the wrong side and open back up. Fold the raw edge to the pressed fold line and then fold once again. Sew in place right next to the edge.

Press all other edges 1.5 cm over.



Pin the pocket in place at the place indicated and sew in place using a double top stitch.



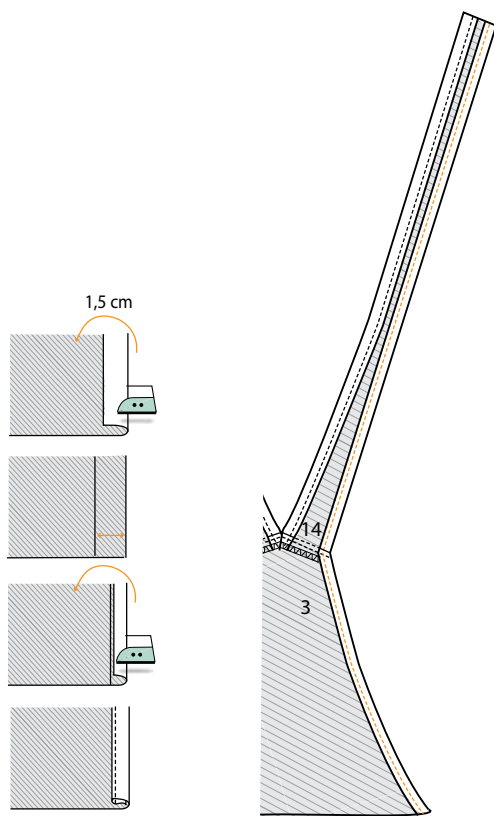
2

a

Press 1.5 cm of the sides with shoulder strap markings (14) onto the wrong side and open back up. Next, fold the raw edge to the pressed fold line and then fold once again. Sew in place right next to the edge.

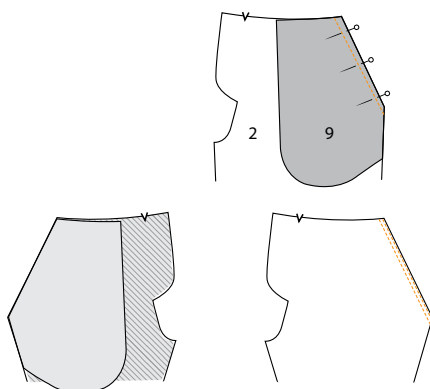
Pin the shoulder straps to the top of the back (3), with the finished sides of the shoulder straps lying face down. Sew into place and finish with a zigzag or overlock stitch.

Iron the seam allowance down and apply a decorative stitch to the back by edge stitching along the seam.



b

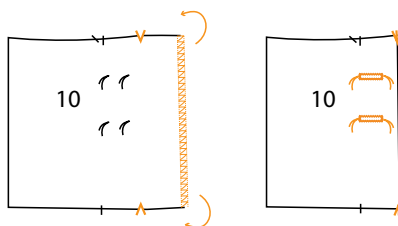
First press the sides of the back and the shoulder straps folded over 1.5 cm and then fold back open. Fold the raw edge to the pressed fold line and then fold once again. Sew together right along the edge.



3

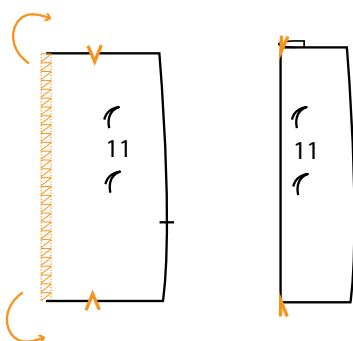
a

Pin and sew along the sloped side of the inner pocket bag lining (9) and the front pant leg (2). Fold the bag over to the wrong side. Sew two rows of stitching parallel to the seam line.



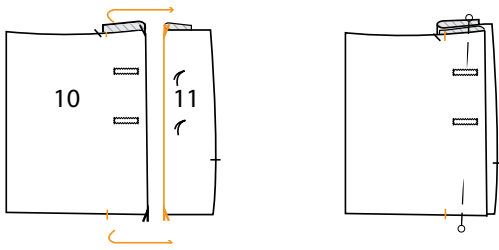
b

Finish the straight raw edge (the side with the buttonholes) of the front pocket opening (10) using an overlock stitch. Press this side over to the V notches on the wrong side. Make horizontal buttonholes at the indicated places.



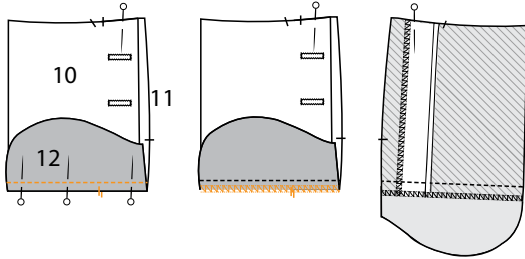
c

Finish the straight raw edge (not the button side) of the back pocket opening (11) using an overlock stitch. Press this side over to the V notches on the wrong side.



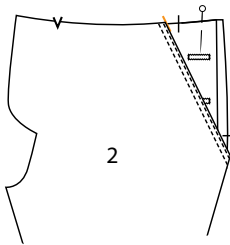
d

Pin the front pocket opening to the back pocket opening. Both pieces have the right-hand side of the fabric facing up and the fold line of the bottom is aligned to the nicks of the top piece.



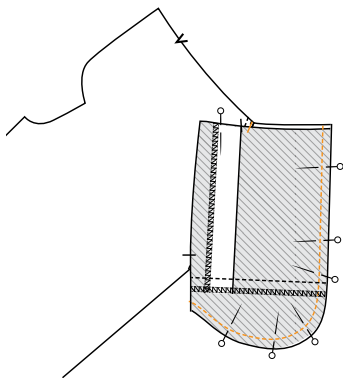
e

Pin and sew the right-hand side of the bottom pocket piece (12) to the bottom of parts 10 and 11 combined, with all nicks aligned. Finish the raw edge using an overlock stitch. Press the seam allowance down.

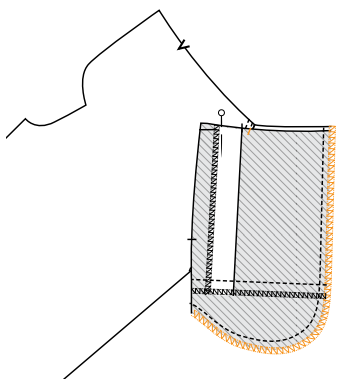


f

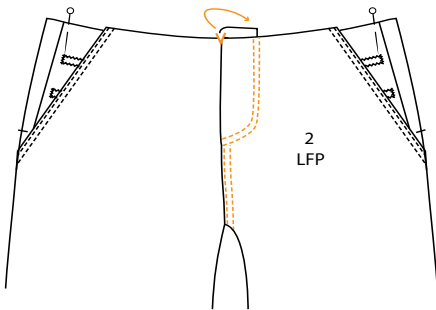
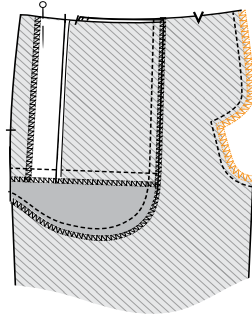
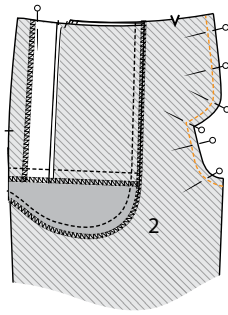
Place this piece of the pocket (constructed from 10+11+12) under the pant leg and match the contours of the pockets precisely.



Fold the pant leg to the side and sew the edges of both pocket pieces together.



Finish the two raw edges together using an overlock stitch.

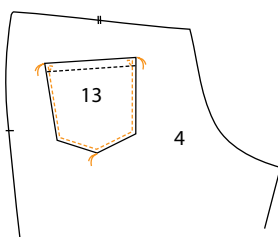
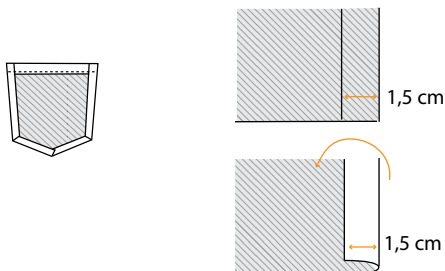
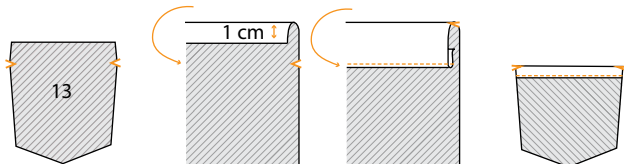


9

Place the front (2) pant legs with front sides of the fabric facing each other and sew the CF seam at 1 cm. Trace the shape of the fly.

Finish the two raw edges together using an overlock stitch.

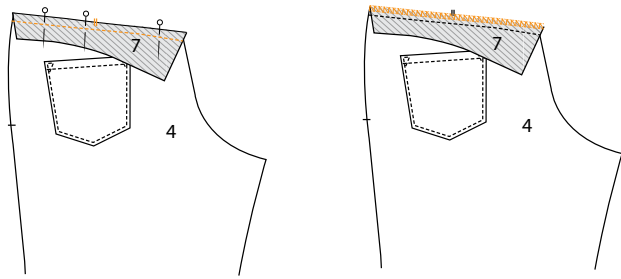
Now lay both pieces with the right sides next to each other and fold the cut facing of the LF back to the V notch. Double stitch the LF along the shape of the facing. Also double stitch the LF next to the CF seam.



4

Press the top of the back pocket (13) 1 cm over. Repeat this step at the V notches and sew in place.

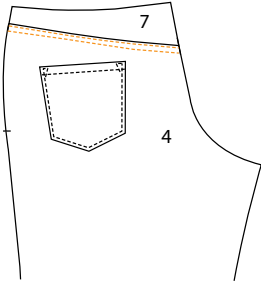
Press the sides and bottoms 1.5 cm over. Pin the pocket to the place indicated on the back pant leg (4) and sew in place. Sew pocket reinforcement triangles in each of the corners.



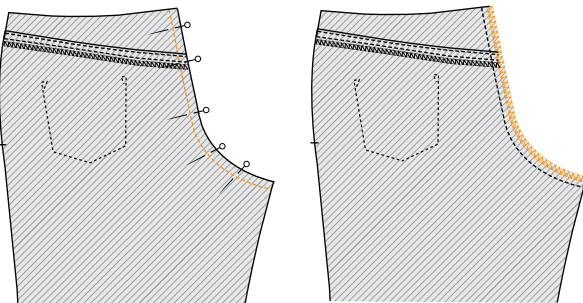
5

a

Pin and sew the back yoke (7) to the back pant legs, ensuring that all nicks are aligned. Finish the two raw edges together using an overlock stitch.

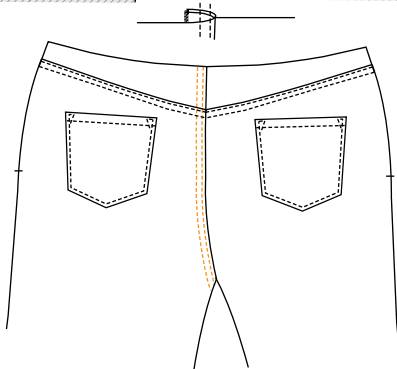


Press the seam allowance down and double top stitch the pant leg parallel to the diagonal seam.

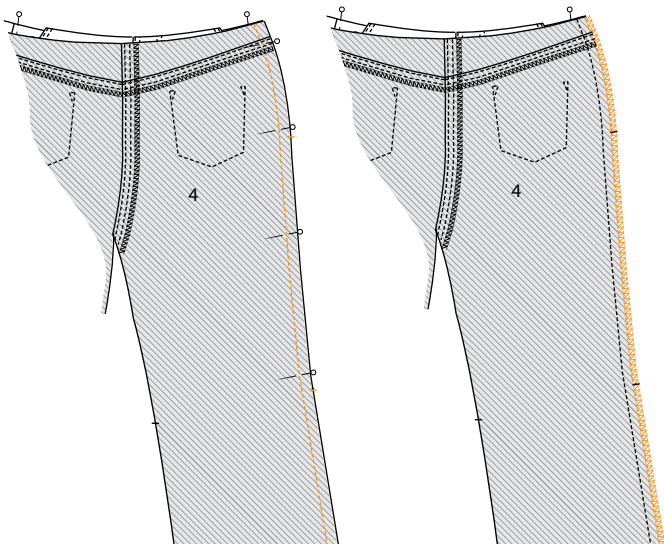


b

Pin and sew the CB seam of the pant legs with the right sides matching exactly. Finish the two raw edges together using an overlock stitch.



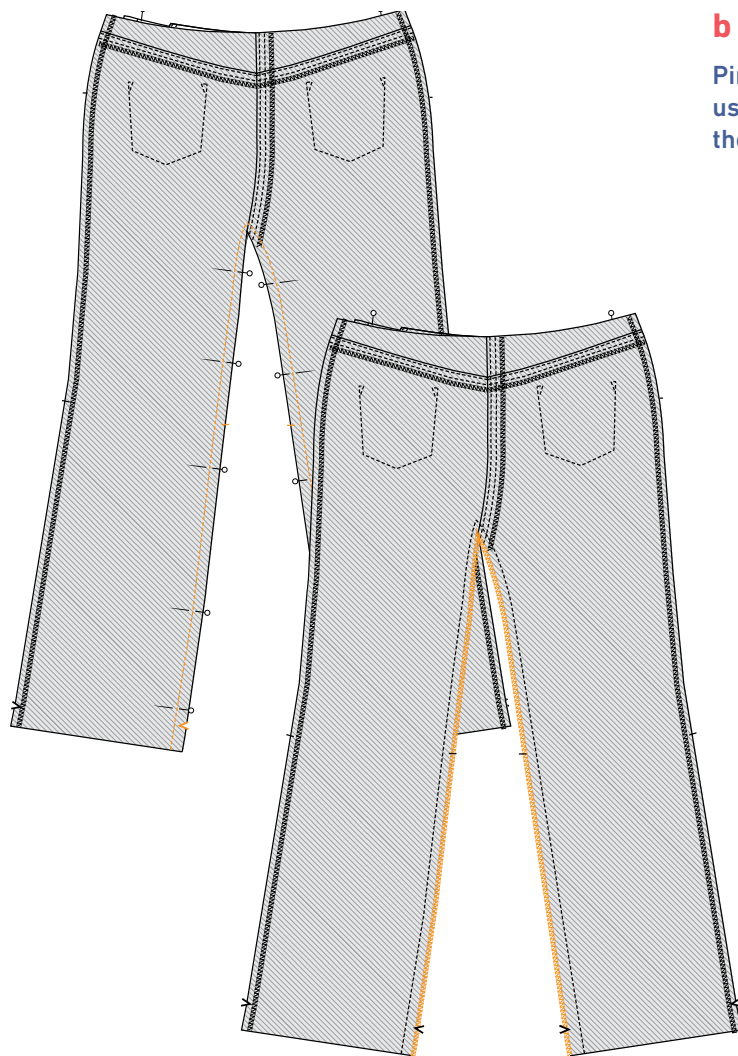
Press the seam allowance in the direction of the LB and sew two rows of topstitching along.



6

a

Pin and sew the side seams together and finish the two raw edges together using an overlock stitch. Press the seam allowance toward the back.



b

Pin and sew the inseams and finish the raw edges together using an overlock stitch. Press the seam allowance toward the front.

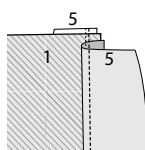
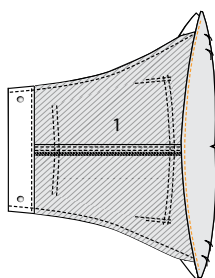
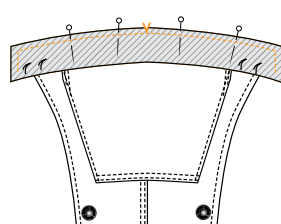
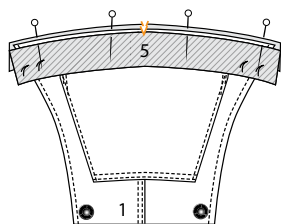


7

a

Press 1 cm of the bottom of the waistband lining onto the wrong side.

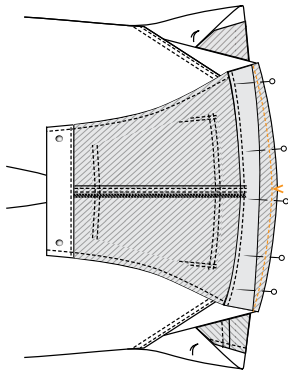
Pin the top of both waistbands together with the top of the front piece in between. The short sides of the waistbands are 1 cm past the finished top. Stitch the sides and the top.



b

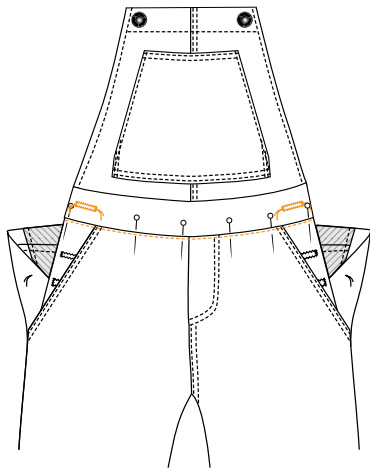
Fold the waistband lining to the side along with the seam allowance and sew the waistband lining 2 mm next to the seam, sewing through all layers. Start as far back as possible and sew to the furthest extent possible.

Trim the excess seam allowance. Turn inside out.

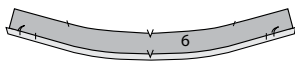


C

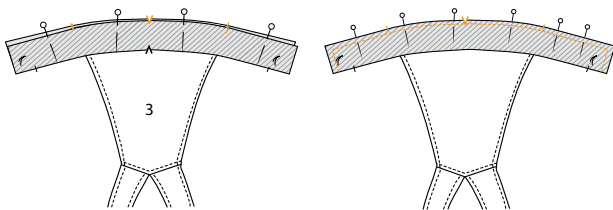
Pin and sew the fabric waistband to the top of the trousers with a 1.5cm seam allowance. Press the bottom of the waistband lining up by 1cm to the wrong side.



Pin the waistband into place along the right side. Secure by stitching in the ditch. Make horizontal buttonholes at the indicated places.



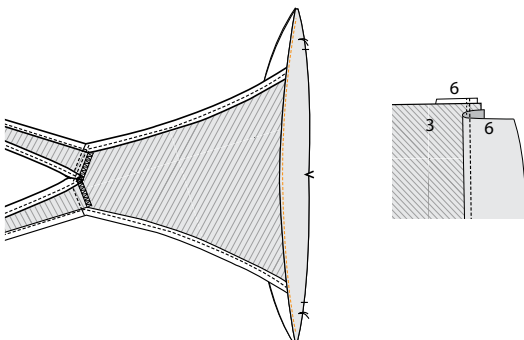
8



a

Press 1 cm of the bottom of the waistband lining onto the wrong side.

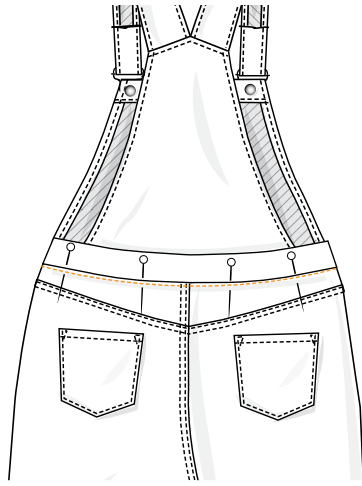
Pin the top of both waistbands together with the top of the back piece in between. Align the sides of the back to the diagonal nicks on the waistband. Stitch the sides and the top.



b

Fold the waistband lining to the side along with the seam allowance and sew the waistband lining 2 mm next to the seam, sewing through all layers. Start as far back as possible and sew to the furthest extent possible.

Trim the excess seam allowance. Turn inside out.

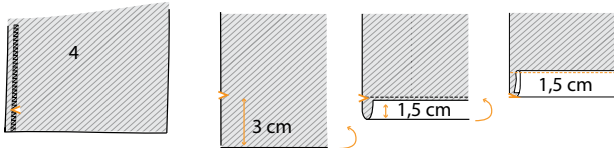


C

Pin and sew the fabric waistband to the top of the pants with a 1.5 cm seam allowance. Fold and press the bottom of the waistband lining up by 1 cm to the wrong side.

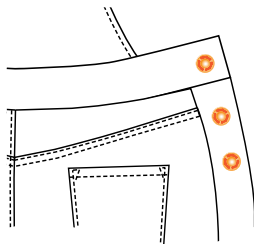
Pin the waistband into place along the right side. Secure by stitching in the ditch.

9



Press the seam 3 cm over and fold back toward the bottom. Lay the raw edge against the pressed fold line and fold. Sew in place.

10



Attach the jeans buttons at the indicated places.